

FR6000 HIGH PRESSURE FLOWMETER INSTALLATION & OPERATION INSTRUCTIONS

FEATURES

- Available for use with both oxygen and breathing air.
- Flow tube and hood molded of impact resistant, medical-grade Lexan ®.
- Precision control valve for accurate, leak-free flow control.
- Machined brass base with integral DISS fitting and plated with a high gloss chrome-like finish.

| SPECIFICATIONS | |
|------------------------------------|---|
| ACCURACY: | ± 0.2% LPM from 1/8 LPM to 4 LPM ± 0.4% LPM from 4 LPM to 8 LPM ± 0.6% LPM from 8 LPM to 15 LPM |
| FLOATS: | ¼" Black Glass Float (3 ½", 8 LPM) ¼" Stainless Steel Float (15 LPM) |
| HOOD: | Lexan ® |
| INLET/OUTLET CONFIGURATION: | 1/8" FNPT Inlet 9/16-18" Male DISS Outlet |
| ELASTOMERS: | Buna-N |
| FLOW CONDITIONS: | Pressure compensated @ 50 PSIG |
| MAXIMUM TEMPERATURE: | 150°F/65°C |
| MAXIMUM PRESSURE: | 100 PSIG |

UNPACKING

Precautions have been taken to prevent any damage from occurring during shipment. However, if the meter is received damaged, report it to the carrier *immediately*. Verify that you have the model and flow range that you require.

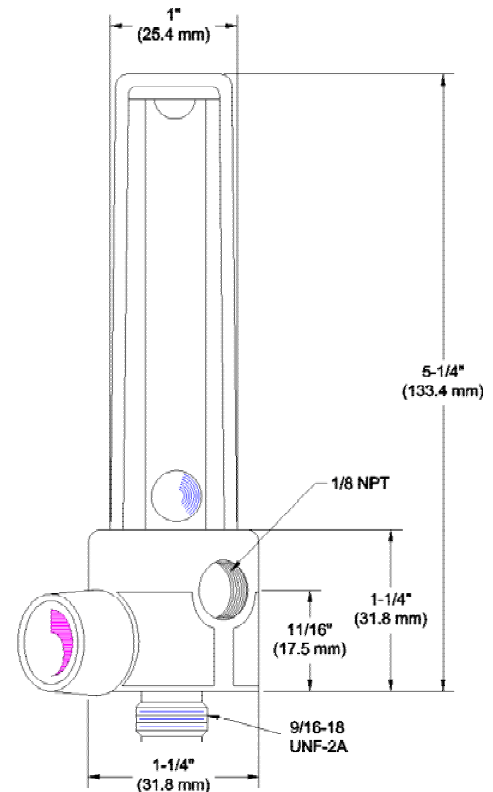
ACHIEVING ACCURATE FLOWRATES

To obtain an accurate flowrate, readings should be taken from the center of the ball. Additionally, the flowmeter should be installed in a manner, which minimizes both external vibrations and internal flow variations. Special care should be taken so that the connections to the meter's inlet and outlet fittings do not overly restrict the gas flow being metered. This could result in a reduced flow volume, preventing the meter from reaching its maximum flowrate. Furthermore, internal

pressures could be affected, which can cause inaccurate flow readings. On start-up, slowly purge any air/gas trapped in the meter.

INSTALLATION

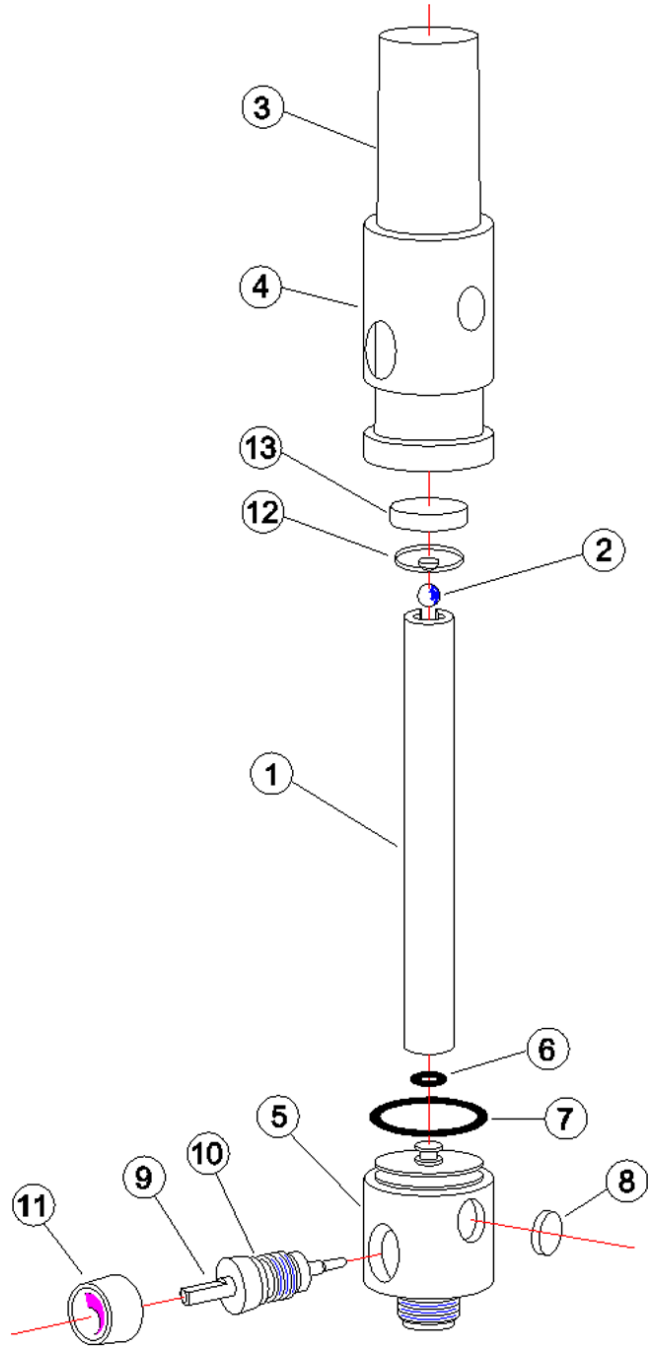
For accurate results, the meter should be installed vertically. Connect the outlet connector to the fitting on the bottom of the meter; connect the gas supply to the side of the meter. Depending on the supply gas, this may require a special adaptor (not supplied). **Over-tightening may cause damage to the fitting, flowmeter or both; which will result in leaks or meter failure.** When connecting the supply gas to the flowmeter, use pipe thread sealant or Teflon® tape to achieve a positive seal.



CAUTION

THIS FLOWMETER IS DESIGNED FOR USE WITH NON-HAZARDOUS FLUIDS AT PRESSURES UP TO 100 PSIG (6.9 BAR) AND TEMPERATURES UP TO 150 °F (65 °C). DO NOT USE HAZARDOUS FLUIDS AND DO NOT EXCEED TEMPERATURE OR PRESSURE LIMITS. USE WITH HAZARDOUS FLUIDS OR EXCEEDING THE PRESSURE AND TEMPERATURE LIMITS MAY CAUSE FAILURE, WHICH COULD RESULT IN INJURY.

| PARTS LIST | | |
|------------|---------|------------------------------|
| Item | Part # | Description |
| 1 | SSA131 | 3-1/2 LPM O2 Tube |
| | SSA128 | 8 LPM O2 Tube |
| | SSA127 | 15 LPM O2 Tube |
| | SSA130 | 8 LPM Air Tube |
| | SSA129 | 15 LPM Air Tube |
| 2 | FID014 | 1/4" BG Float (3-1/2, 8 LPM) |
| | FID020 | 1/4" SS Float (15 LPM) |
| 3 | BOD099 | Hood |
| 4 | SSA069 | Shroud - O2 Meters |
| | SSA071 | Shroud - Air Meters |
| 5 | BOD008 | Brass Meter Base |
| 6 | ORBS006 | O-ring |
| 7 | ORBS020 | O-ring |
| 8 | PHW006 | Filter Disk |
| 9 | ASM016 | Valve Assembly |
| 10 | ORBS011 | O-ring |
| 11 | PHW015 | Knob |
| 12 | DSK004 | Large Bumper |
| 13 | DSK003 | Large Cushion |



CONTINUED PRODUCT IMPROVEMENT MAY RESULT IN SPECIFICATION REVISIONS
 WHEN ORDERING PARTS PLEASE INCLUDE PART DESCRIPTION, ITEM NUMBER AND TYPE OF MATERIAL REQUIRED.